

Understand
your benefits.

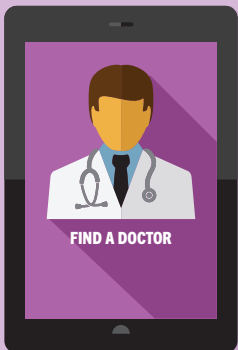
EDUCATION
MATTERS



NEED HELP FINDING A DOCTOR?

Research where to go for care at Wellmark.com

Your provider network is an important part of your health plan coverage. When you use the doctors and hospitals that belong to your specific network, you save money.



To find a doctor or hospital within your health plan network:

- 1 Go to Wellmark.com and log in to myWellmark (or register if it's your first time visiting the site.)** By logging in, you can be sure you're searching for providers in your plan's network.
- 2 Go to Search for a Provider, and choose the option to find a provider or find a facility.** You can then search for doctors, hospitals or clinics by name or specialty. Select **Advanced Search** to narrow your options.

Things to know about your search results:

- **Have a Wellmark Blue PPO plan?** You'll see both local and national providers.
- **Have a Wellmark Blue HMOSM plan?** You'll only see the providers participating in your HMO network.
 - Important: If you see a provider outside your network, you may have to pay more for services or your benefits may not apply at all.
 - If you are in need of immediate medical care while you are away from home or would still like to view out-of-network providers, please enter your location, and click on the option to select by plan name. Choose "Indemnity Network" from the list of search options to see results for nearby providers.

We're here to help.



Call the Wellmark Customer Service number on your ID card for more information about finding a provider in your network and your benefits. **If you feel you are in an emergency situation, please seek medical attention immediately.**

LEARN MORE



Rate this doctor

*Recommend

Would you recommend this doctor to your friends and family?

Yes No

*Experience

How would you rate your overall experience and satisfaction with this doctor?

Low High

Communication

How well did this doctor communicate with you about your health?

Low High

Availability

How would you rate this doctor's availability for your appointment?

Low High

Environment

How would you rate this doctor's overall practice environment?

Low High

*Required

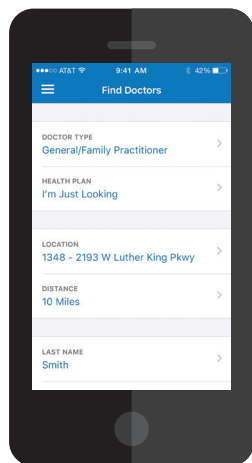
RATE AND REVIEW DOCTORS AND HOSPITALS

Choosing a health care provider is an important decision. Wellmark makes it easy for you to find information about providers.

Our Find a Provider tool allows you to view ratings and reviews from other Wellmark members, and post reviews of providers based on your experiences.

- Use a star-rating system similar to other consumer product rating tools you've seen online.
- Review doctors (M.D., D.O.), nurse practitioners, physician assistants and hospitals. All reviews are confidential. Providers will not know if or how you specifically rated them, but they will be able to view the overall ratings. You will not be able to review facilities such as a hospital.
- You must be a Wellmark member to rate a provider, and verify that you received care from the provider before you can complete a review.

You must be registered for myWellmark at Wellmark.com to rate a provider, so sign up today!



Find a doctor on the go!

Wellmark's mobile app will help you get the care you need, when you need it. The Wellmark mobile app helps you find the nearest doctor, urgent care or hospital within your provider network.

DOWNLOAD THE FREE APP TODAY!

Visit Wellmark.com/GoMobile

Wellmark complies with applicable federal civil rights laws and does not discriminate on the basis of race, color, national origin, age, disability, or sex.

ATENCIÓN: Si habla español, los servicios de asistencia de idiomas se encuentran disponibles gratuitamente para usted. Comuníquese al 800-524-9242 o al (TTY: 888-781-4262).

注意：如果您说普通话，我们可免费为您提供语言协助服务。请拨打 800-524-9242 或（听障专线：888-781-4262）。

ACHTUNG: Wenn Sie deutsch sprechen, stehen Ihnen kostenlose sprachliche Assistenzdienste zur Verfügung. Rufnummer: 800-524-9242 oder (TTY: 888-781-4262).



Wellmark Blue Cross and Blue Shield of Iowa, Wellmark Health Plan of Iowa, Inc., Wellmark Synergy Health, Inc., Wellmark Value Health Plan, Inc. and Wellmark Blue Cross and Blue Shield of South Dakota are independent licensees of the Blue Cross and Blue Shield Association.

© 2018 Wellmark, Inc.